

Technical data

1 Nominal voltage: 300V/8A
PITCH: 3.5mm

2 Insulation Withstands Voltage:
AC1600V/MIN

3 Insulation Resistance:
1000MΩ or more at DC500V

4 Using temperature range: -40°C ~ 115°C

5 Soldering temperature range: 260°C ± 5°C / 10sec

6 Safety approval:

7 RoHS Compliance

8 Critical dimension:

9 Undimmed Tolerances:

Dim L = (P - 1) x 3.5 + 4.2	Dim B	Dim L
Dim B = (P - 1) x 3.5	±0.15	±0.20
P = number of poles	±0.20	±0.25
0-30mm	±0.25	±0.30
over 30mm-60mm	±0.30	±0.40
over 60mm-90mm	±0.30	±0.40
over 90mm	±0.30	±0.40

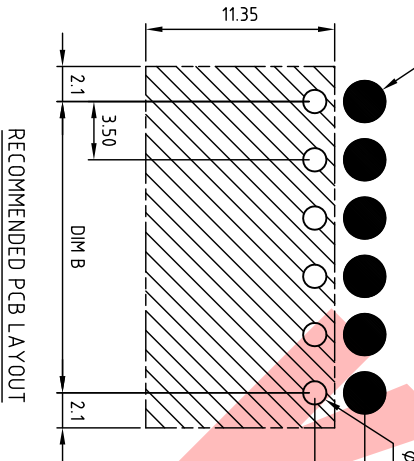
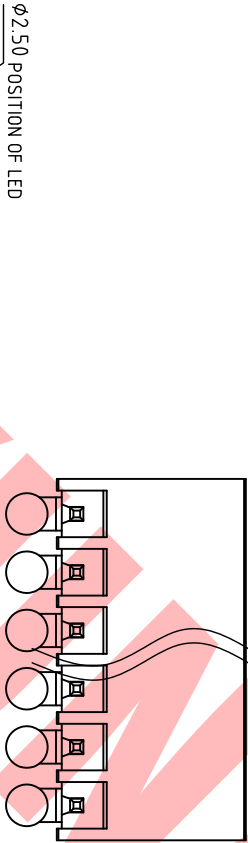
HABH350 xx x Lxx

① Poles 02-24

② Color

③ Custom

L00 K MARK LOK KUNACON MARK....



RECOMMENDED PCB LAYOUT

△	SIGN	DESCRIPTION	CHK	DATE

3	PIN	COPER	TIN PLATED	P					
2	Light guide	PC UL94V-0		P					
1	BODY	PA6T UL94V-0	BLACK	1					
MATERIAL									
DWG	WF. Zhang	DATE	2018.03.31	UNITS	MM	SHEET	1 OF 1	Tolerance	
CHK	WF. Zhang	DATE	2018.03.31	SCALE	NONE 3:1 (.)	REV.	A	±0.50	
APP.		DATE		TITLE	HA-BH350 Series Close Type Right-angle(90D) Light guide				
PART NO.		HABH350xxxLxx			PART NO.		HA-B350-B202		
DWG NO.		HA-B350-B202			DWG NO.		HA-B350-B202		



KUNA Contact Technology Co., Ltd
http://www.kunacon.com

